

FlexSCADA

Redefining SCADA

The background image is a dark, moody landscape. It features a prominent mountain peak in the center, partially obscured by a dense forest of evergreen trees. The sky is a deep blue-grey with soft, wispy clouds. The overall tone is somber and mysterious, with the text providing a stark contrast in white.

Making SCADA work
for BC.

The Problem

Many small water treatment facilities are located in remote areas and only have operators on-site when needed, because of this, problems may go unnoticed for days!



Traditional Dial Out.. Random Alarm Clock?

Dial out systems are commonly used to alert operators to alarm conditions however these systems are often so annoying that at some point they are shut off permanently.

This further reduces system reliability.



How did this happen?

The SCADA industry has been very slow to adopt the internet, part of this is due to the fact that traditional SCADA systems were designed for large industrial plants where one or multiple full time operators could be present to oversee operation.

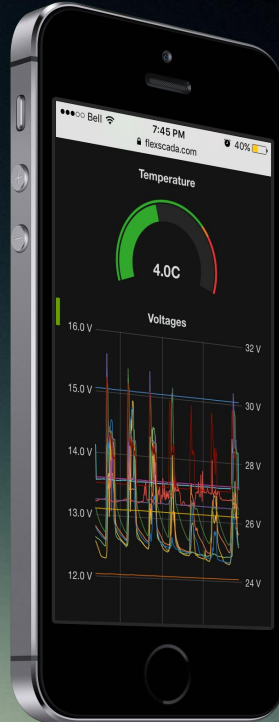
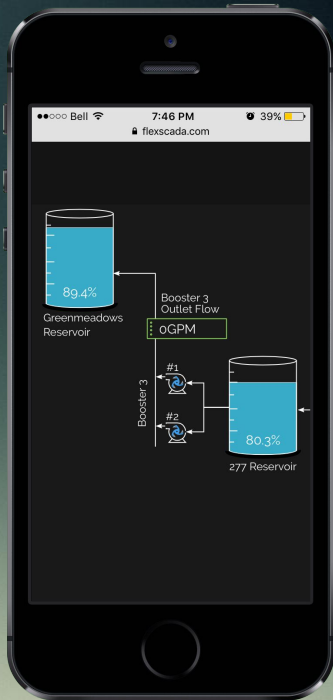
Most water plant operators in BC share many other responsibilities which limit the time they can spend on-site.



The solution

With the internet this limitation should not exist!

By connecting your SCADA system to the internet operators can instantly view system trends and manage alarms from anywhere!



Well Pump 1: On Off Well Pump 2: On Off Mode: Auto Manual

REALTIME VALUES

Well 1 Level

Well 2 Level

Pressure

Battery Voltage

45ft

45psi

13.3V

Reservoirs

Wireless Link

Reservoirs

Wireless Link

Pressure

45psi

10/13 16:00 10/14 00:00 10/14 08:00 10/14 16:00 10/15 00:00 10/15 08:00 10/15 16:00 10/16 00:00 10/16 08:00 10/16 16:00 10/17 00:00 10/17 08:00 10/17 16:00
t: 5.12 — top resevoir Min: 4.01 Max: 6.98 Current: 6.59 — booster Min: 0 Max: 1.00 Current: 0

10/12 16:00 10/13 00:00 10/13 08:00 10/13 16:00 10/14 00:00 10/14 08:00 10/14 16:00 10/15 00:00 10/15 08:00 10/15 16:00 10/16 00:00 10/16 08:00 10/16 16:00 10/17 00:00 10/17 08:00 10/17 16:00



Alarms Reporting

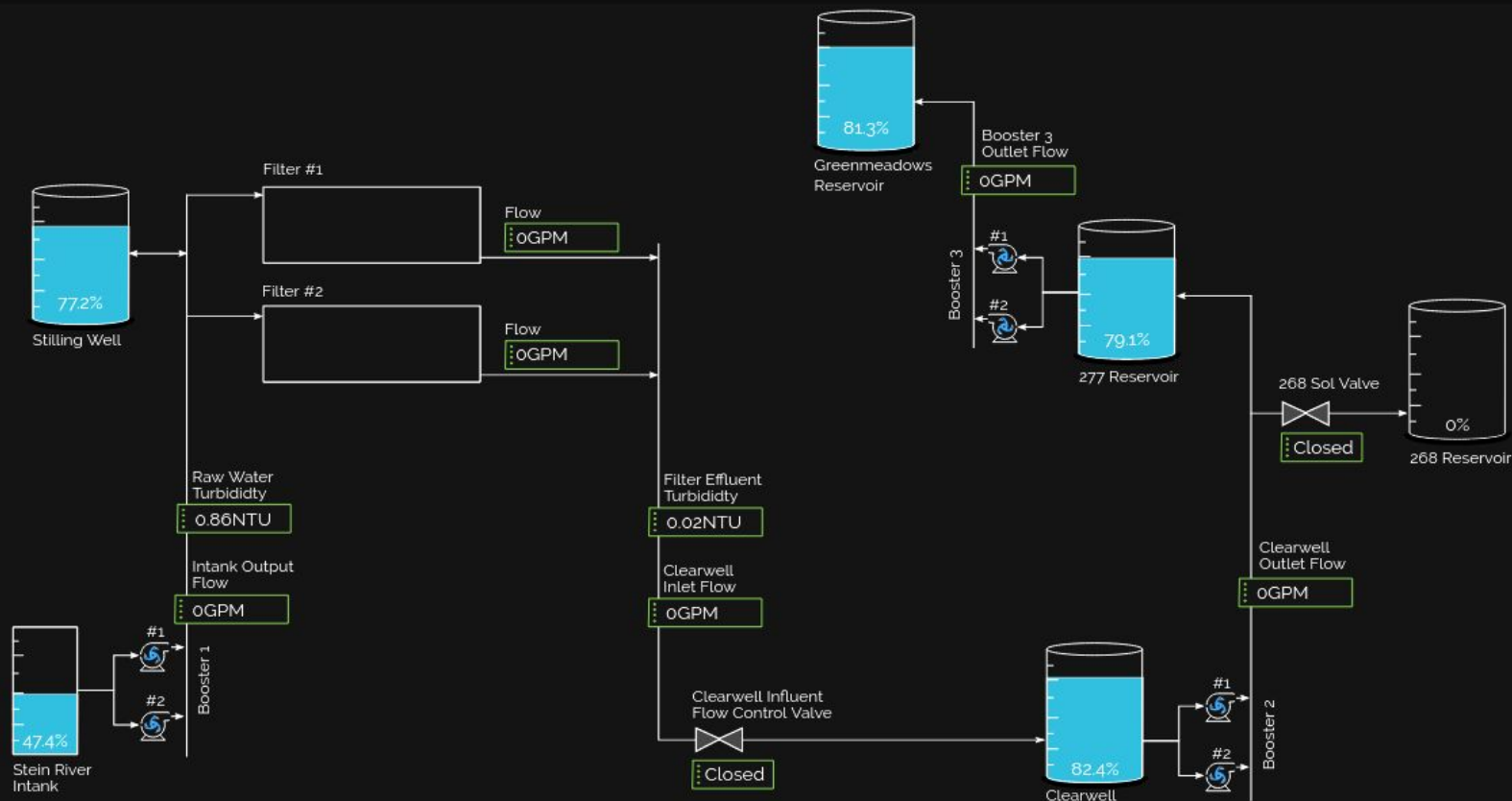
Counters

Historical Details

Pumps

Set Points

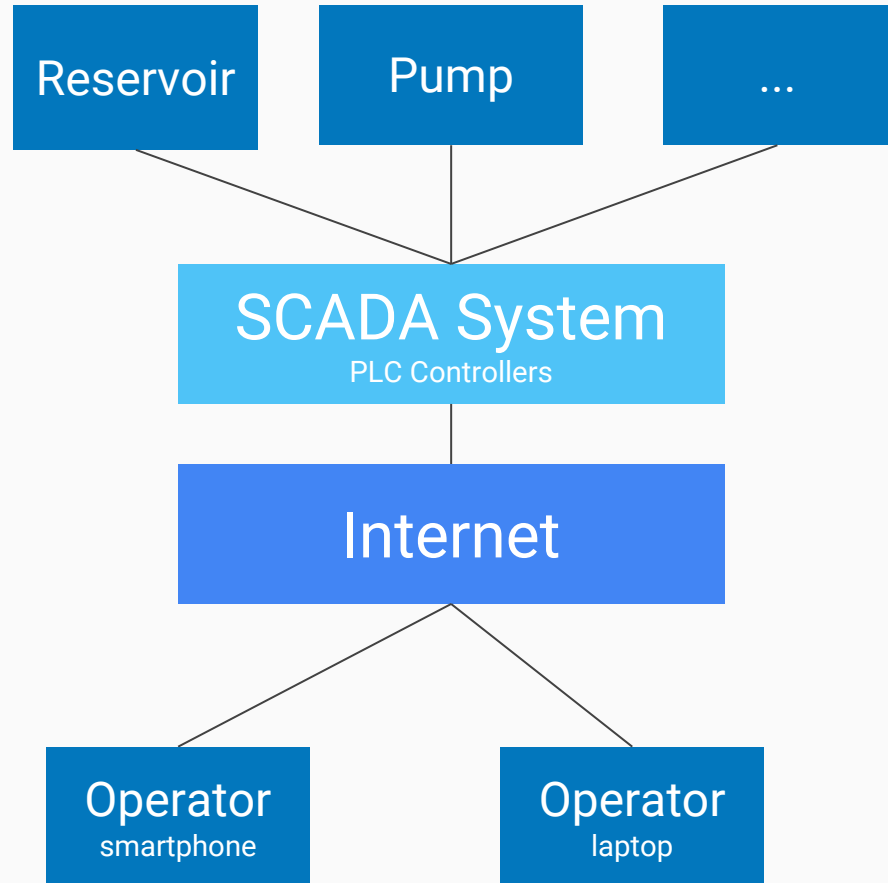
Well Levels



How It Works

The SCADA system remains functional at all times with or without internet.

Internet access simply provides a bridge which allows operators to remotely access the plant through the internet from their smartphone or laptop.



Q/A

- **Security**

Does Internet connectivity expose the system to possible hackers?

- **Reliability**

How will an internet outage affect system performance?

- **Cost**

Is the advantage worthwhile?