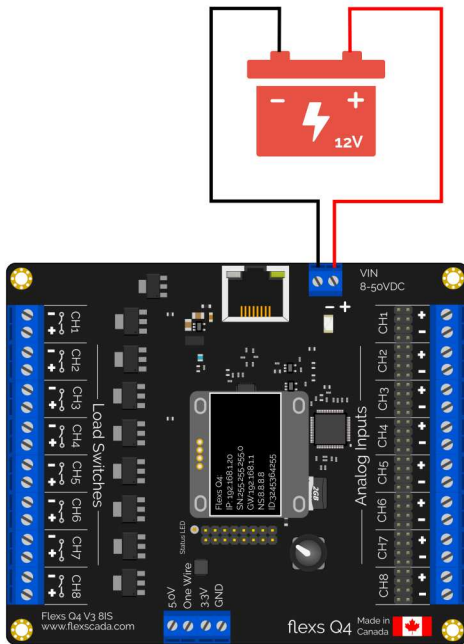
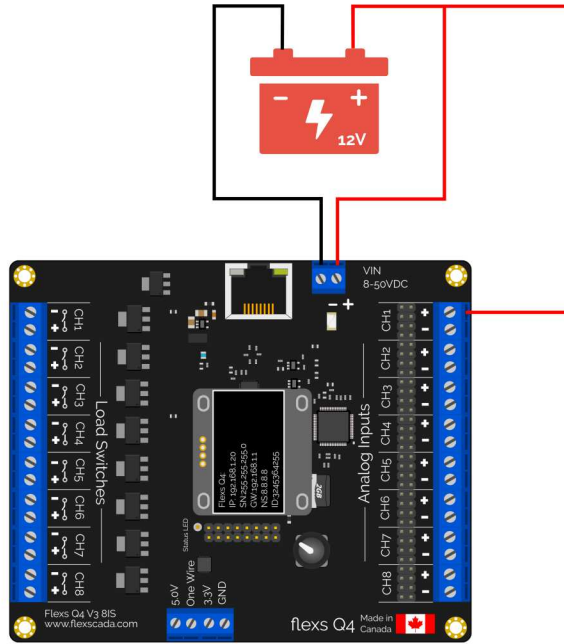


Voltmeter and Load Control Tutorial

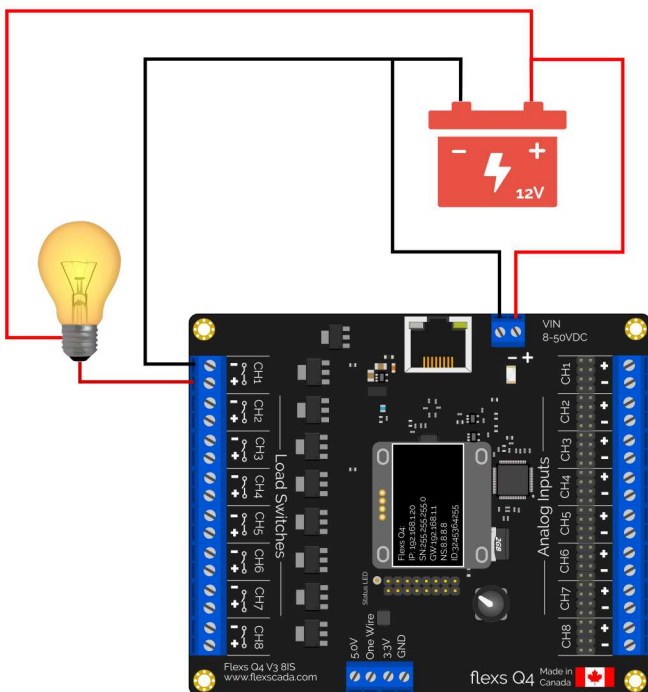
Step 1. Power the Flexs Q4 by connecting the supply terminal to a dc power source.



Step 2. To measure battery voltage, connect the positive battery terminal to one of the analog input channels as shown.



Step 3. To switch a light on and off, route it's supply through one of the onboard load switches as shown.



Step 4. Open the devices onboard webserver and click on the "Registers" tab, from there you can view the battery voltage and toggle the load switch.

Device Control Panel

192.168.1.20/index.shtml#

FlexSCADA Status Registers Graphing Oscilloscope Logic Configuration

Analog Inputs

R1 - CH 1: 12.046 ← Battery Voltage on CH1

R2 - CH 2: 0.001

R3 - CH 3: 0.002

R4 - CH 4: 0

R5 - CH 5: -0.001

R6 - CH 6: -0.001

R7 - CH 7: 0.001

R8 - CH 8: -0.001

Open Drain DC Relay Switches

R9 - Output 1: Off ← Click here to toggle load switch state

R10 - Output 2: On

R11 - Output 3: On

R12 - Output 4: On

R13 - Output 5: On

Device Control Panel Copyright © 2016 - FlexSCADA